

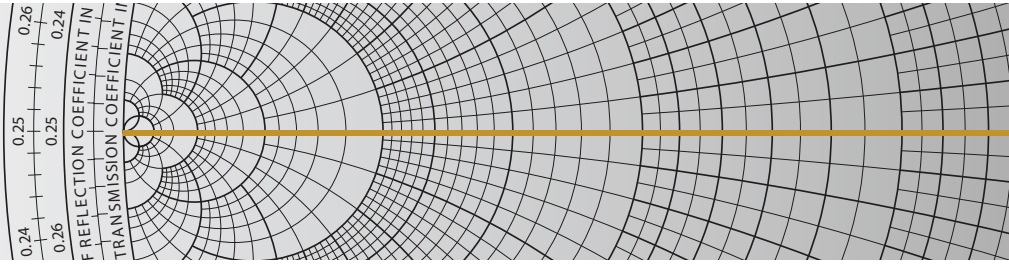
WPA-10-941523

Rev: October 2012

W-band MMIC packaged amplifier,
with WR-10 waveguide interfaces,
for general applications.

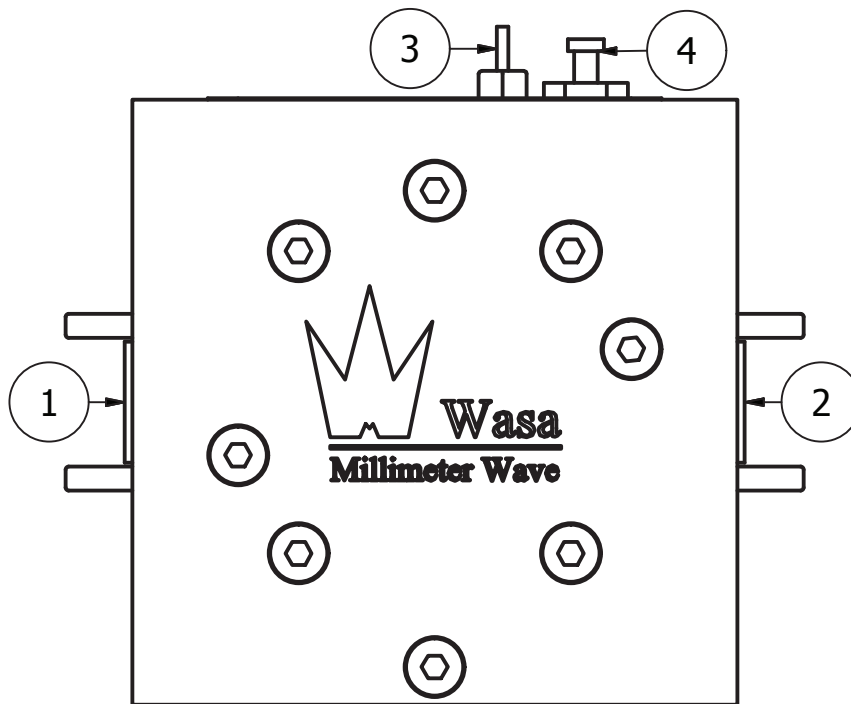


Specification	Min	Typ	Max	Unit
RF frequency	80		99	GHz
Linear gain	14			dB
Psat		18		dBm
Input level drive			5	dBm
Supply voltage	5		8	V
Supply current		200		mA
Interfaces	WR-10 , UG-387/U			



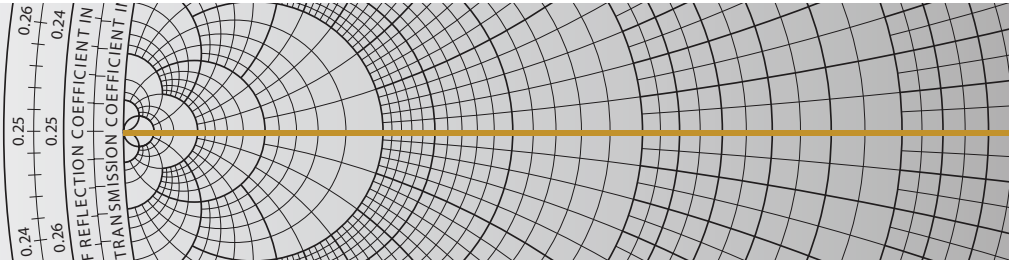
Connections

Rev: October 2012



No.	Name	Function
1	RF input	RF input port (WR-10, UG-387/U)
2	RF output	RF output port (WR-10, UG-387/U)
3	V+	Power supply (5-8 V)
4	GND	Ground (0 V)

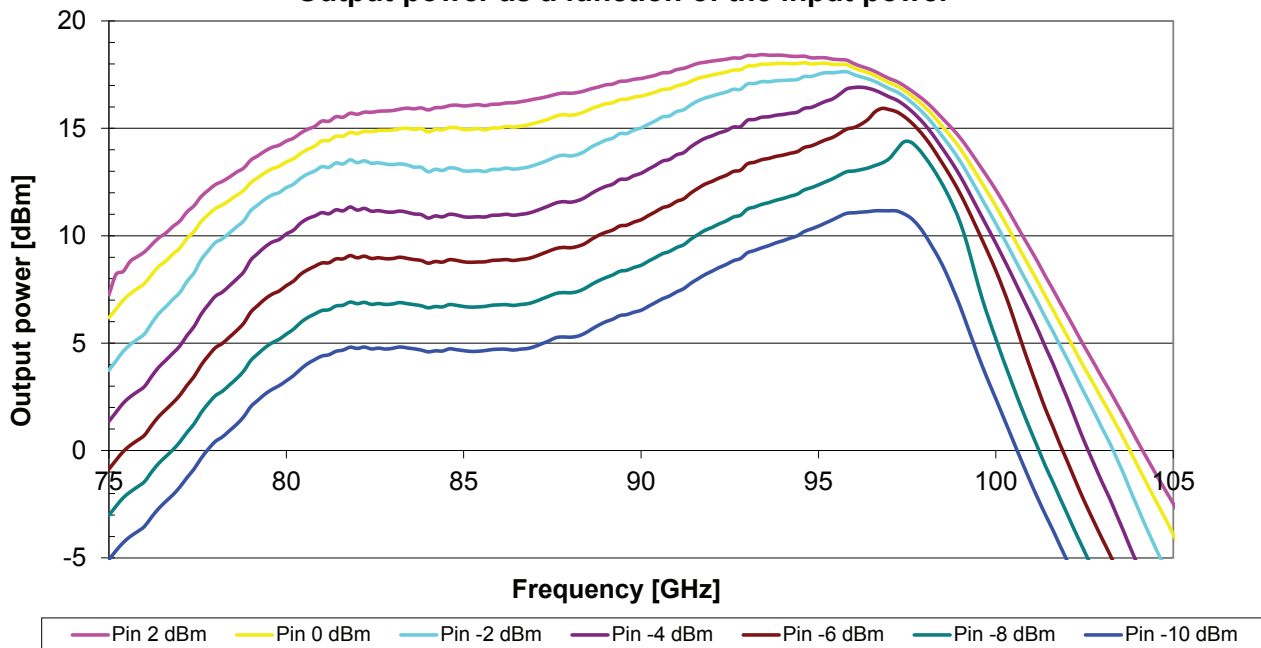
NB! Use a power supply that do not generate over-voltages such as spikes.



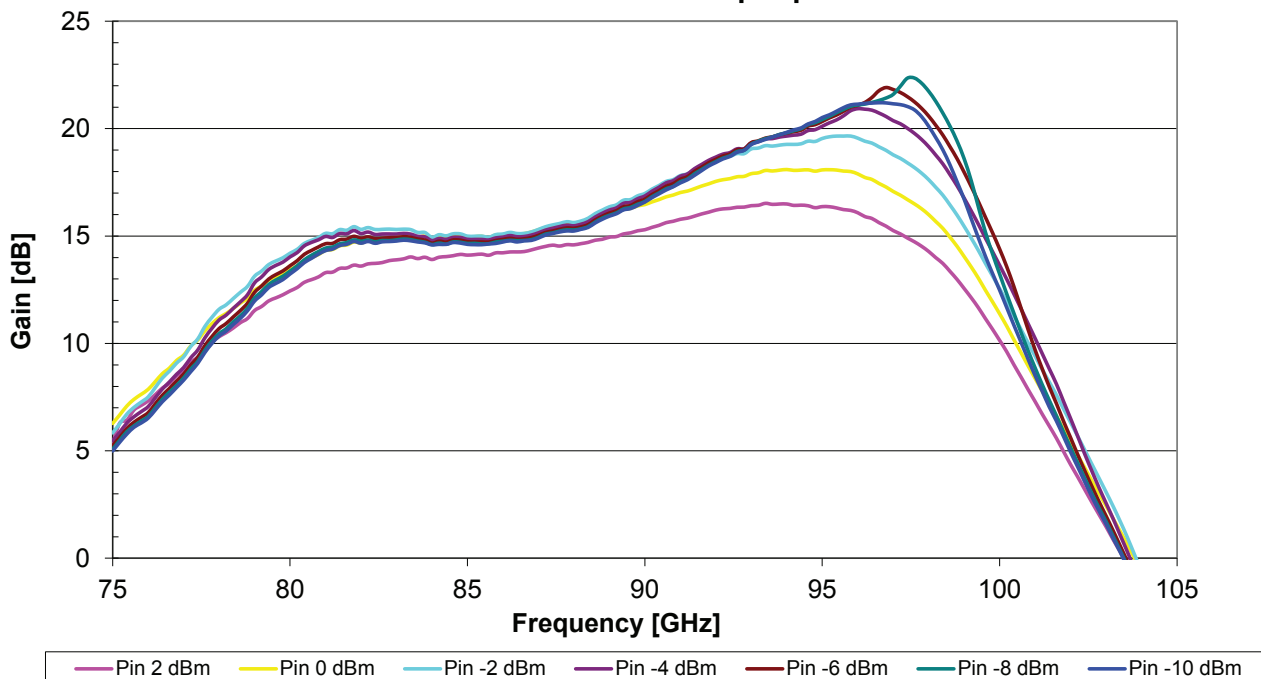
Measured power and gain

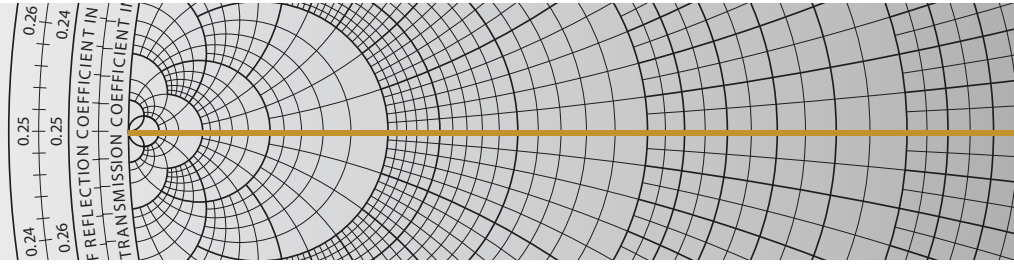
Rev: October 2012

Output power as a function of the input power



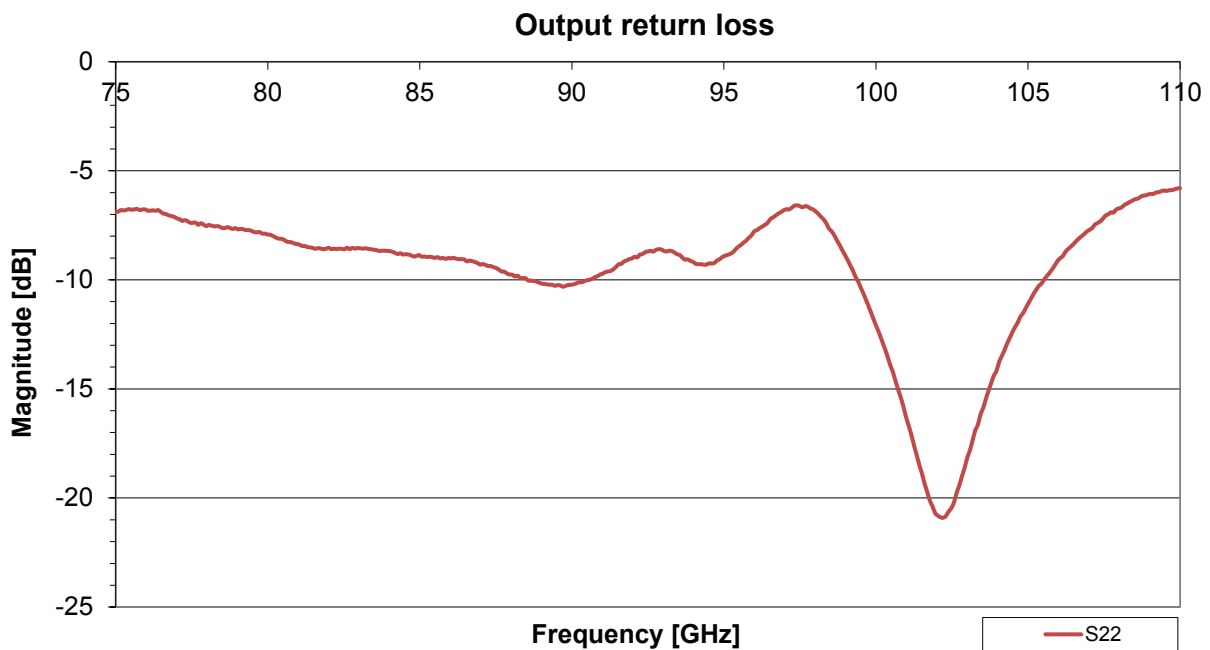
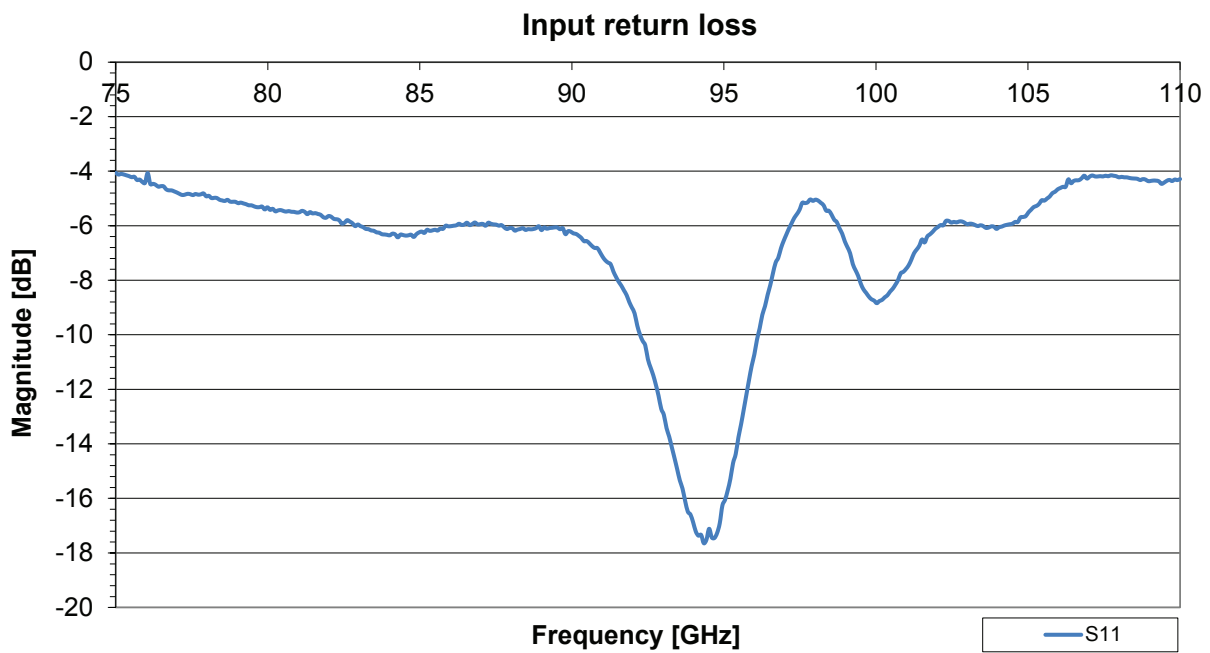
Gain as a function of the input power

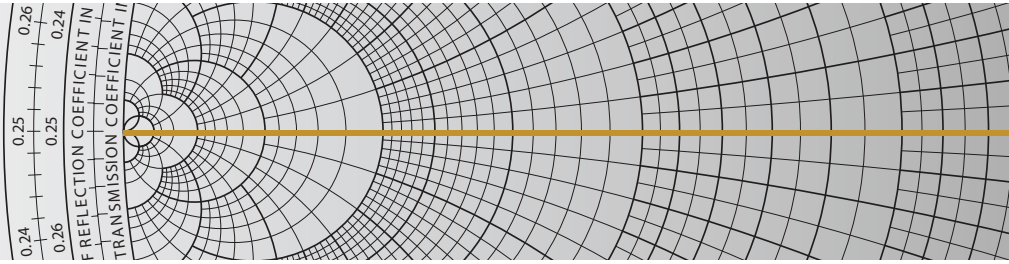




Measured return loss

Rev: October 2012





Package dimension (mm)

Rev: October 2012

